



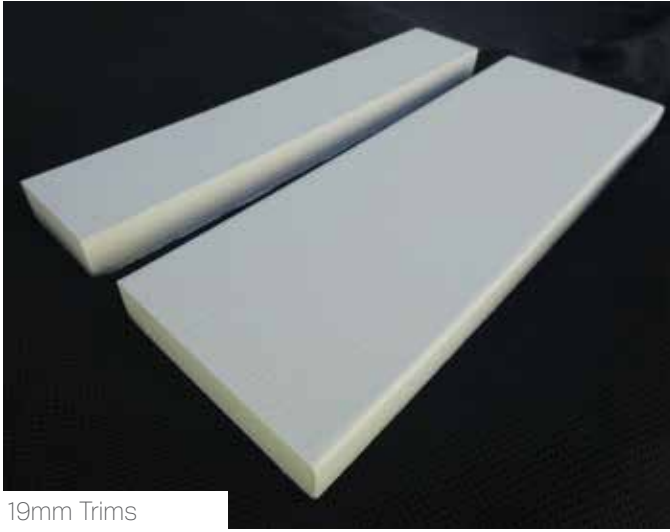
Cemintel Trims 19mm and 38mm

Cemintel Trims are multipurpose and provide professional finishes for windows, door frames and internal/external corners. Cemintel Trims are highly durable and conveniently pre-primed.

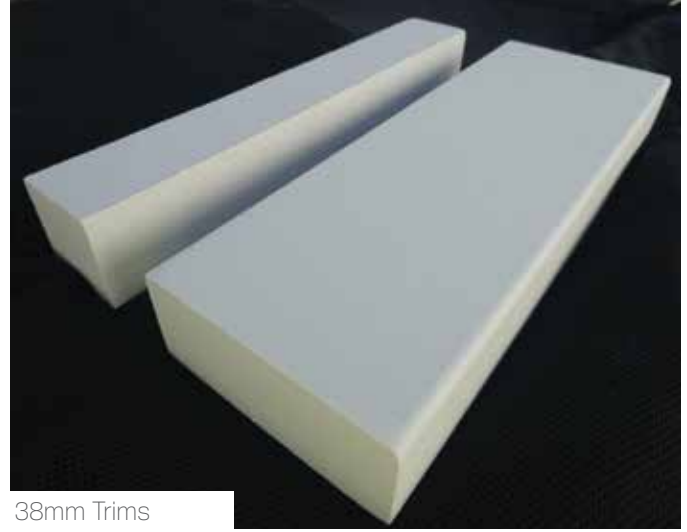
Cemintel 19mm Trims are suitable for a wide range of Cemintel products including:
10mm Headland | 10mm Endeavour | 7.5mm Woodgrain and Smooth Planks

Cemintel 38mm Trims are suitable for Balmoral and a variety of Cemintel products.





19mm Trims



38mm Trims

Sizes	Product code
19 x 45 x 4200mm	454626
19 x 89 x 3640mm	454627

Sizes	Product code
38 x 45 x 4200mm	454628
38 x 89 x 3640mm	454629

For direct fixing Cemintel Trims to Timber Framing

Use Class 3 Hot Dipped Galvanised (HDG) or Class 4 Stainless Steel (S/S) fasteners.

	19mm Cemintel Trims	38mm Cemintel Trims
- Paslode 2.5mmø Plain or Ring Shank Nail. Pre-drill trim before fastening.	50mm	60mm
- 2.8mmø Clout nail. Pre-drill trim before fastening.	50mm	65mm
- Minimum 8g timber screw. Pre-drill and countersink trim before fastening.	50mm	65mm

For direct fixing Cemintel Trims to Steel Framing

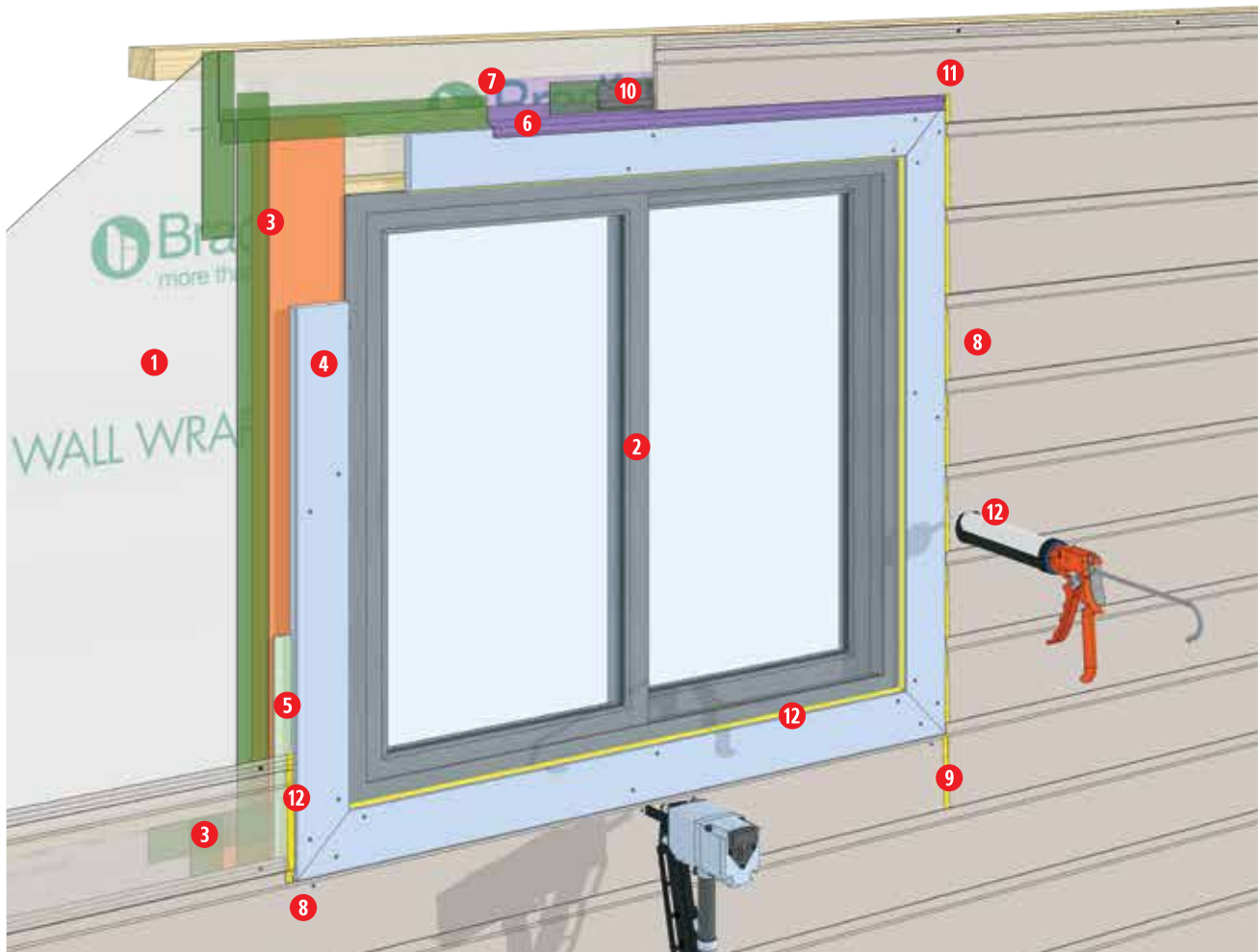
Use Class 3 coated or Class 4 Stainless Steel (S/S) fasteners.

- Minimum 8g screw. Pre-drill and countersink trim before fastening.	50mm	65mm
--	------	------

Fill and patch the fastener heads where required with Gyprock® Wet Area Base Coat.

19mm Trims

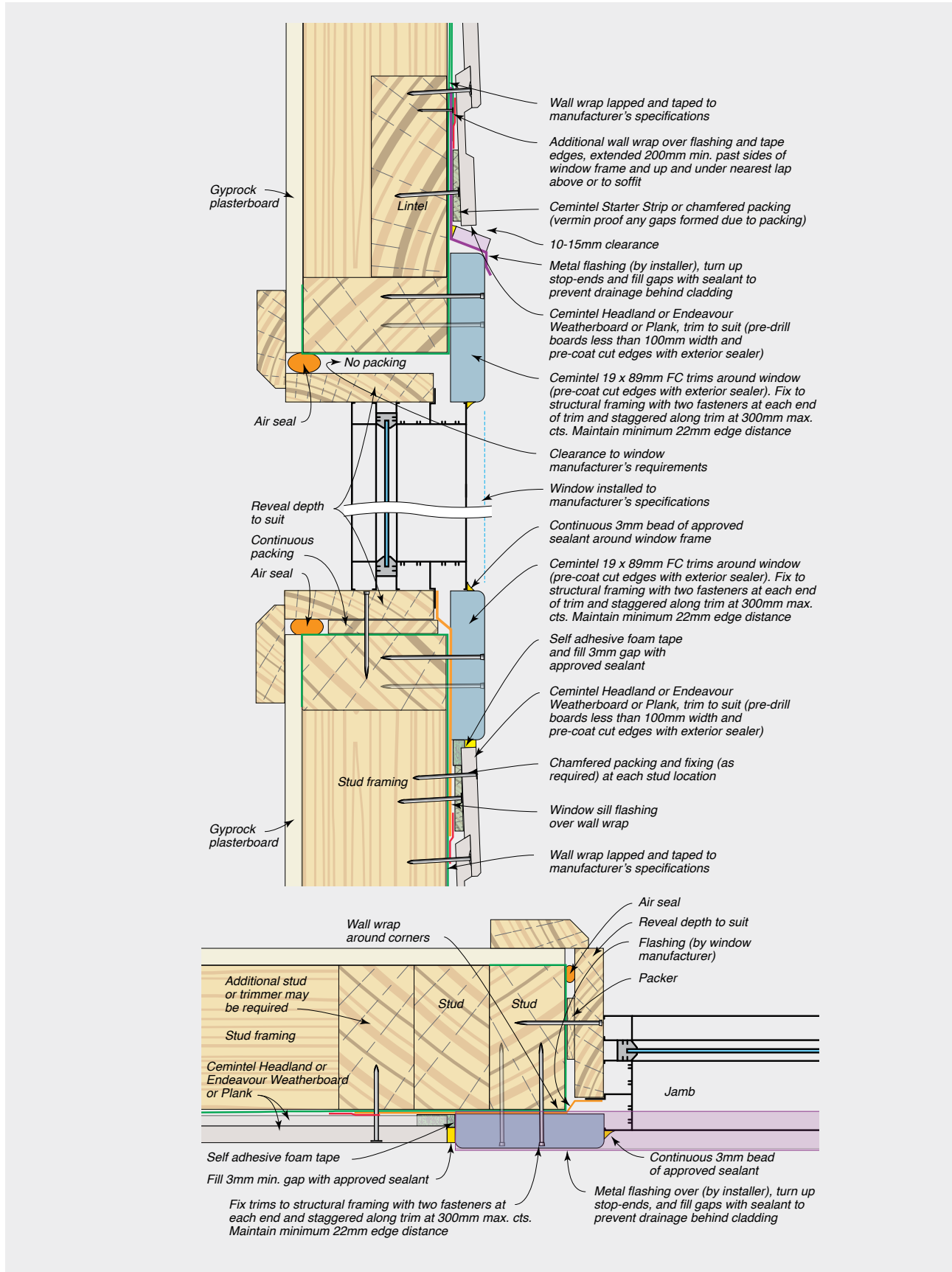
FIGURE 1.01 Typical Window Installation Procedure with Cemintel FC Trim – Cemintel Headland or Endeavour Weatherboard or Plank



- 1 Install wall wrap fixed, lapped and taped to manufacturer's specifications
- 2 Install window into opening to manufacturer's specifications
- 3 Tape window jamb and sill flashing to wall wrap
- 4 Cut and install Cemintel 19 x 89mm FC trims around window (pre-coat cut edges with exterior sealer). Fix to structural framing with two fasteners at each end of trim and staggered along trim at 300mm max. cts. Maintain minimum 22mm edge distance
- 5 Install self adhesive foam tape to sides and below window trims as backing for sealant
- 6 Install metal head flashing to the full width of window trims (supplied by others), turn up stop-ends, and fill gaps at ends with sealant to prevent drainage behind cladding
- 7 Install additional wall wrap over metal head flashing, extended 200mm min. past sides of window and up and under nearest lap above or to soffit, and tape at all edges
- 8 Trim Cemintel Weatherboard, to provide 3mm minimum clearance to Cemintel FC window trim (pre-drill boards less than 100mm width and pre-coat cut edges with exterior sealer)
- 9 Cut and fit weatherboards to provide a movement joint at the edge of the opening and fill with approved sealant.
- 10 Install Cemintel Starter Strip or chamfered packing to support the weatherboard over the window (vermin proof any gaps formed due to packing)
- 11 Trim Cemintel weatherboard to suit head flashing, provide drainage clearance of 10-15mm above flashing (pre-drill boards less than 100mm width and pre-coat cut edges with exterior sealer)
- 12 Fill gaps between weatherboards and window trims at sides and bottom of window with approved sealant, and apply 3mm bead of sealant at the junction of the window frame and trims

19mm Trims

FIGURE 1.02 Typical Window Installation with Cemintel FC Trim – Cemintel Headland or Endeavour Weatherboard or Plank



19mm Trims

FIGURE 1.03 Typical External Corner Installation with Cemintel FC Trims – Cemintel Headland or Endeavour Weatherboard or Plank

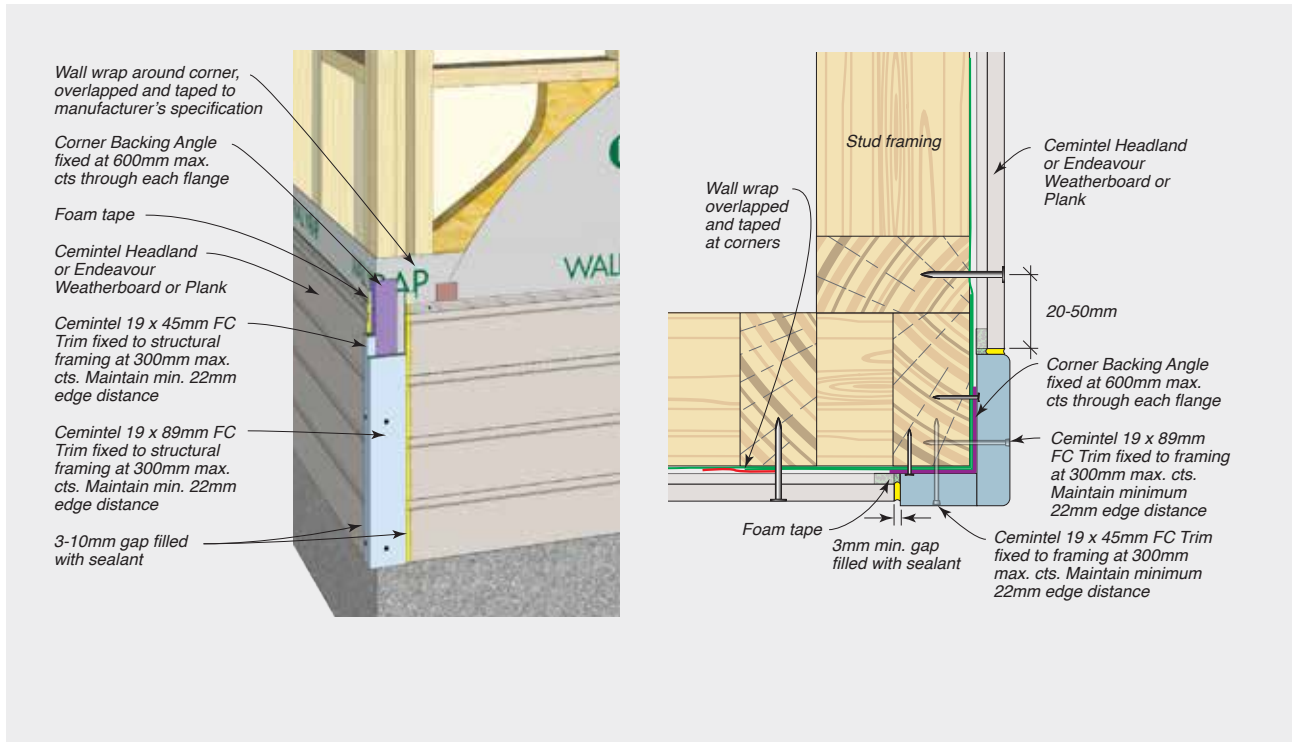
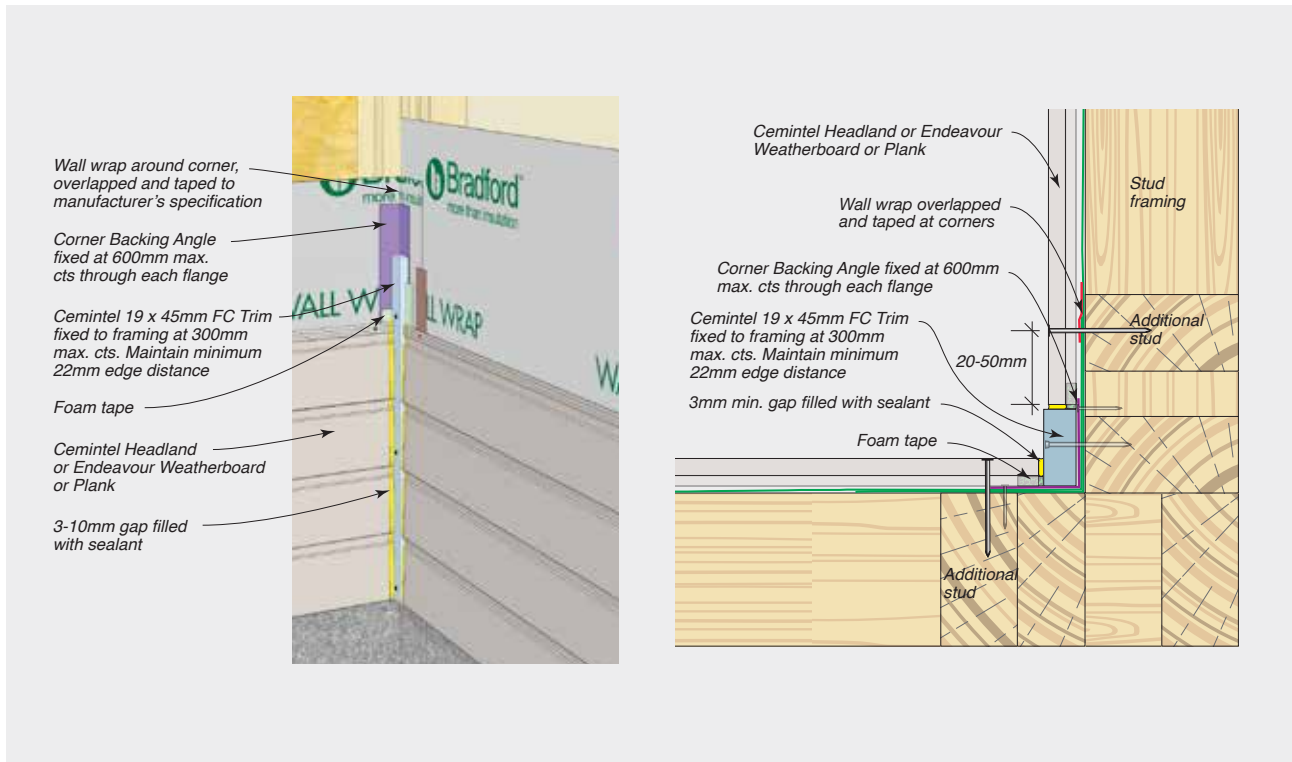
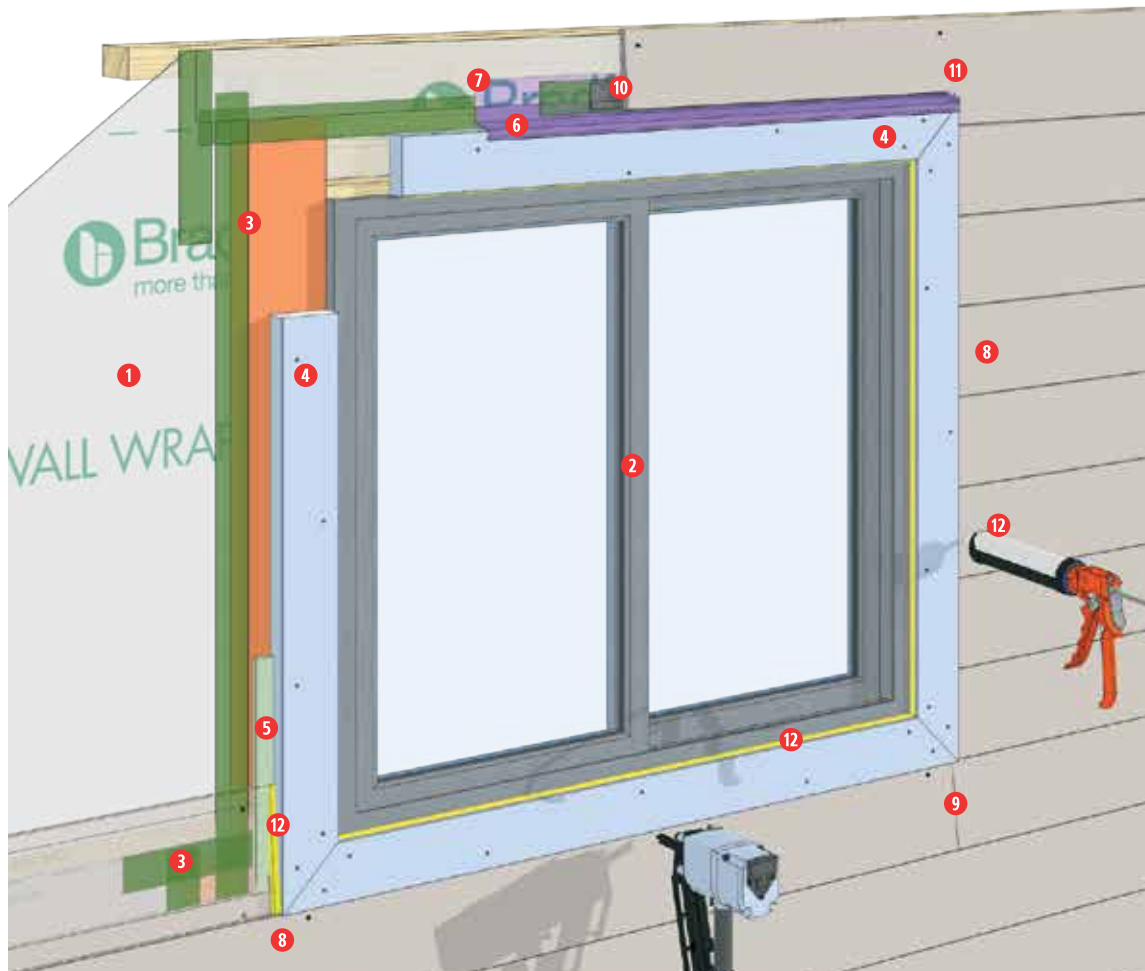


FIGURE 1.04 Typical Internal Corner Installation with Cemintel FC Trims – Cemintel Headland or Endeavour Weatherboard or Plank



38mm Trims

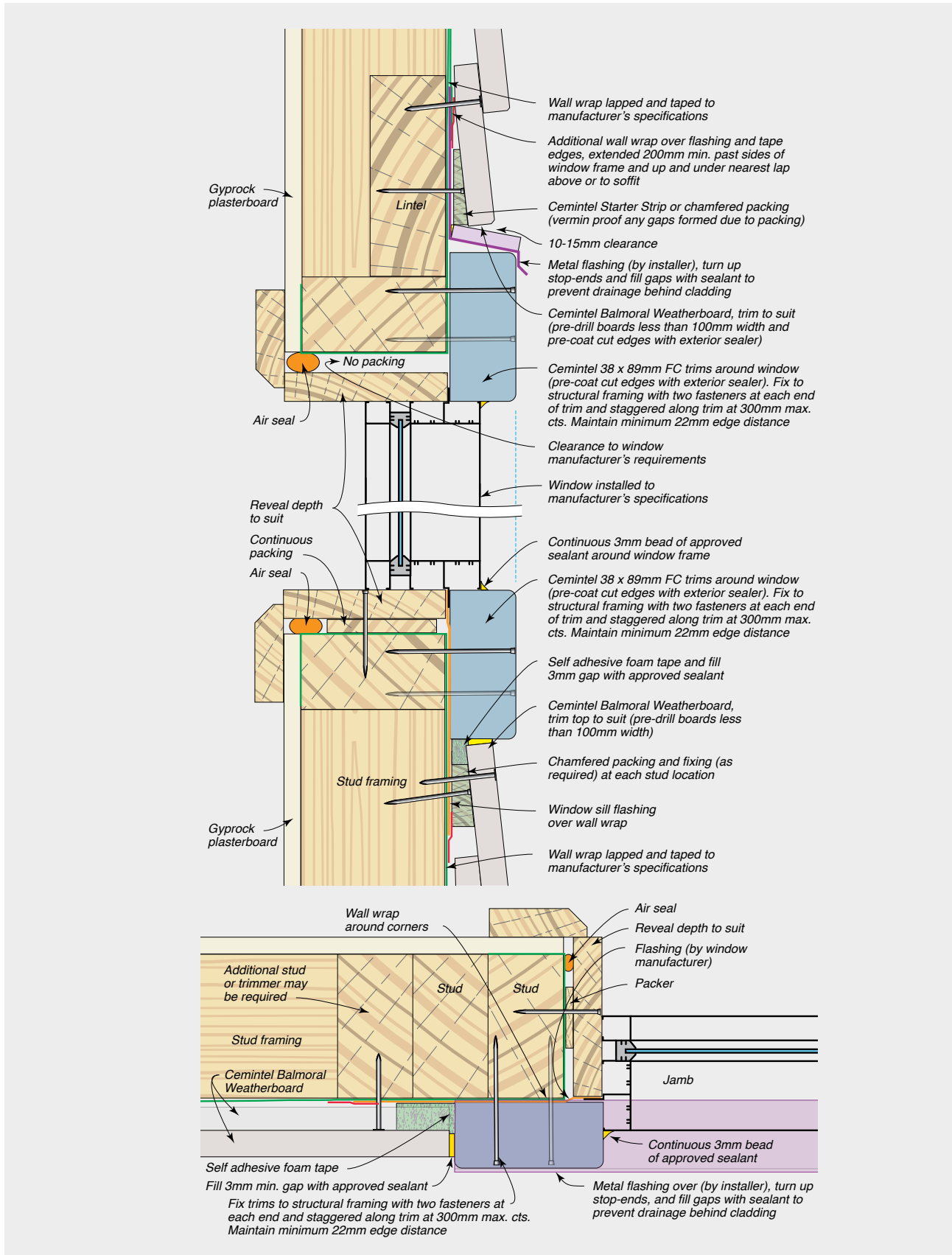
FIGURE 1.05 Typical Window Installation Procedure with Cemintel FC Trim – Cemintel Balmoral Weatherboard



- 1 Install wall wrap fixed, lapped and taped to manufacturer's specifications
- 2 Install window into opening to manufacturer's specifications
- 3 Tape window jamb and sill flashing to wall wrap
- 4 Cut and install Cemintel 38x89mm FC trims around window (pre-coat cut edges with exterior sealer). Fix to structural framing with two fasteners at each end of trim and staggered along trim at 300mm max. cts. Maintain minimum 22mm edge distance
- 5 Install self adhesive foam tape to sides and below window trims as backing for sealant
- 6 Install metal head flashing to the full width of window trims (supplied by others), turn up stop-ends, and fill gaps at ends with sealant to prevent drainage behind cladding
- 7 Install additional wall wrap over metal head flashing, extended 200mm min. past sides of window and up and under nearest lap above or to soffit, and tape at all edges
- 8 Trim Cemintel Weatherboard, to provide 3mm minimum clearance to Cemintel FC window trim (pre-drill boards less than 100mm width and pre-coat cut edges with exterior sealer)
- 9 Cut and fit weatherboards to provide a movement joint at the edge of the opening and fill with approved sealant.
- 10 Install Cemintel Starter Strip or chamfered packing to support the weatherboard over the window (vermin proof any gaps formed due to packing)
- 11 Trim Cemintel weatherboard to suit head flashing, provide drainage clearance of 10-15mm above flashing (pre-drill boards less than 100mm width and pre-coat cut edges with exterior sealer)
- 12 Fill gaps between weatherboards and window trims at sides and bottom of window with approved sealant, and apply 3mm bead of sealant at the junction of the window frame and trims

38mm Trims

FIGURE 1.06 Typical Window Installation with Cemintel FC Trim – Cemintel Balmoral Weatherboard



38mm Trims

FIGURE 1.07 Typical External Corner Installation with Cemintel FC Trim – Cemintel Balmoral Weatherboard

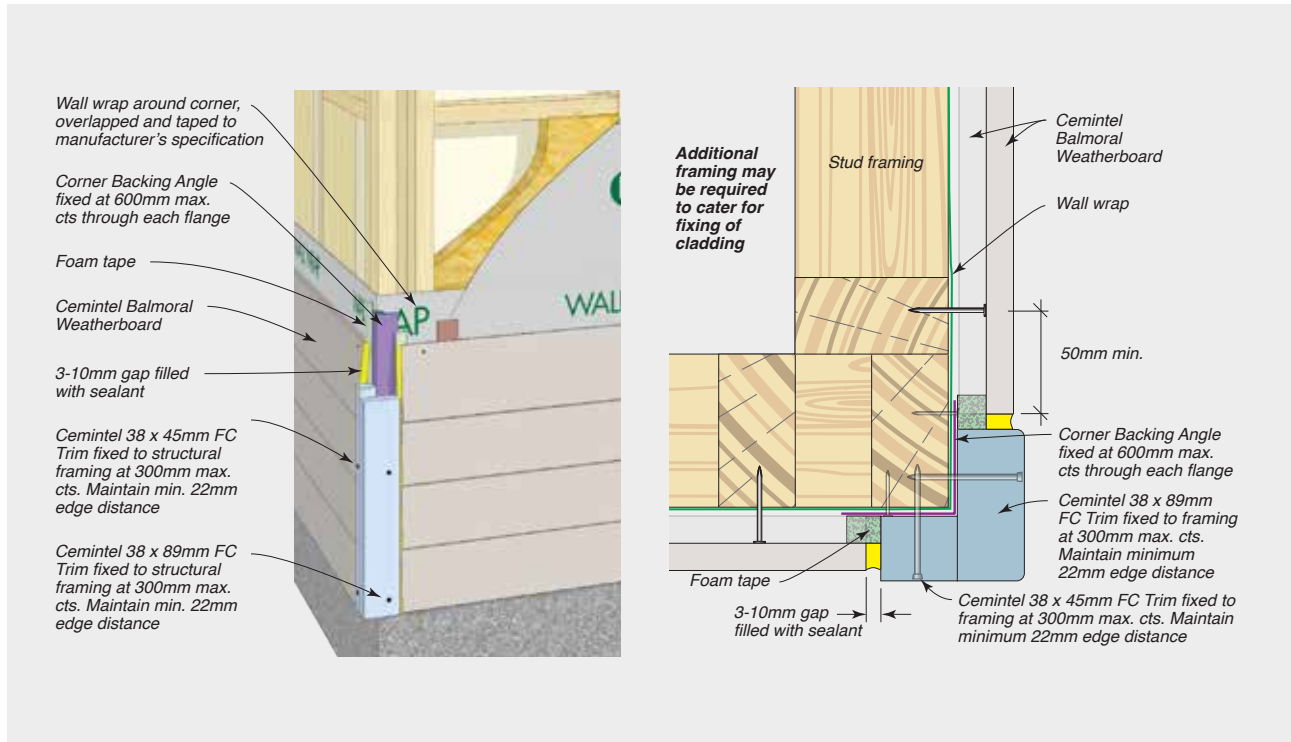


FIGURE 1.08 Typical Internal Corner Installation with Cemintel FC Trim – Cemintel Balmoral Weatherboard

