

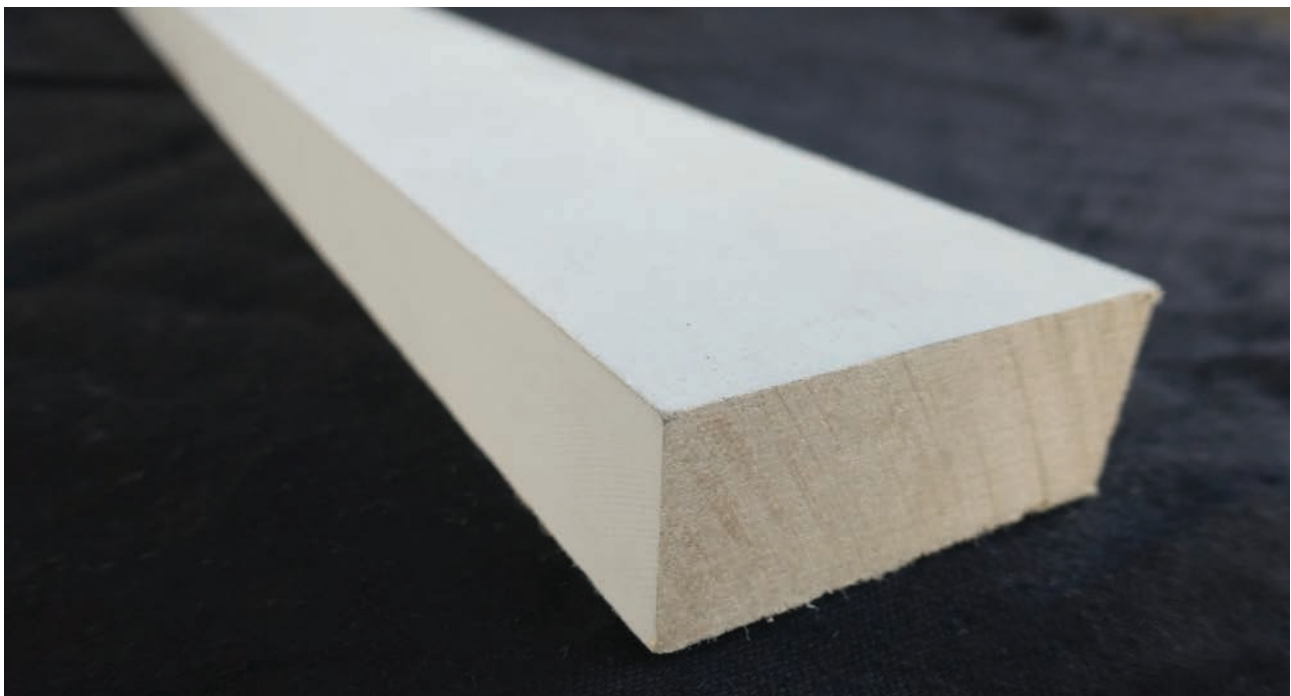
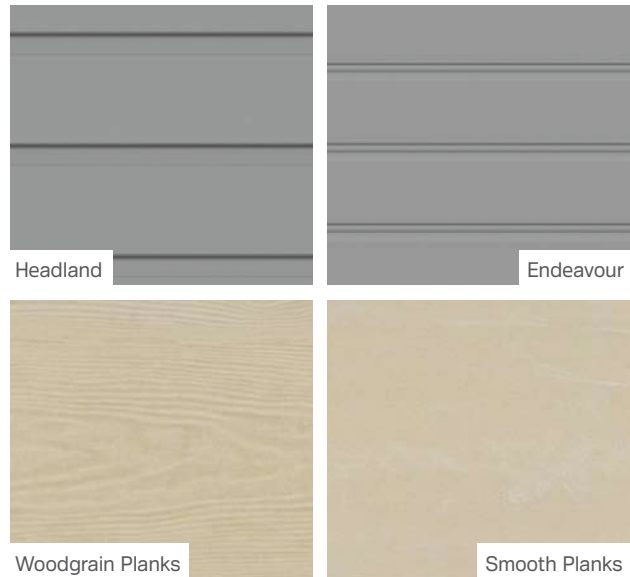
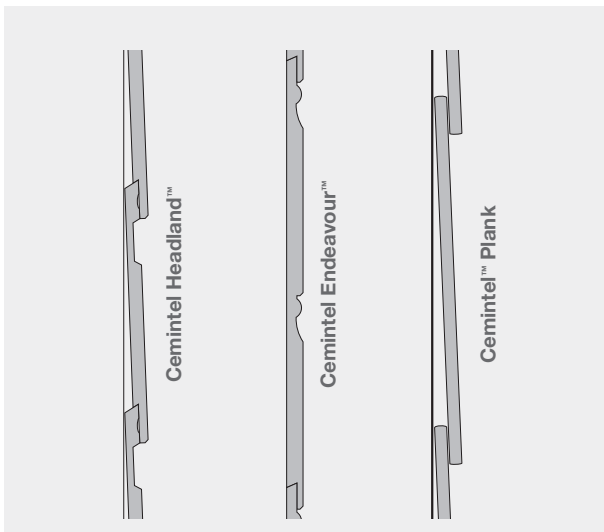
Cemintel Trims

19mm **AVAILABLE NOW**

Cemintel Trims are multipurpose and provide professional finishes for windows, door frames and internal/external corners. Cemintel Trims are highly durable and conveniently pre-primed.

Cemintel 19mm Trims are suitable for a wide range of Cemintel products including:
 10mm Headland | 10mm Endeavour | 7.5mm Woodgrain and Smooth Planks

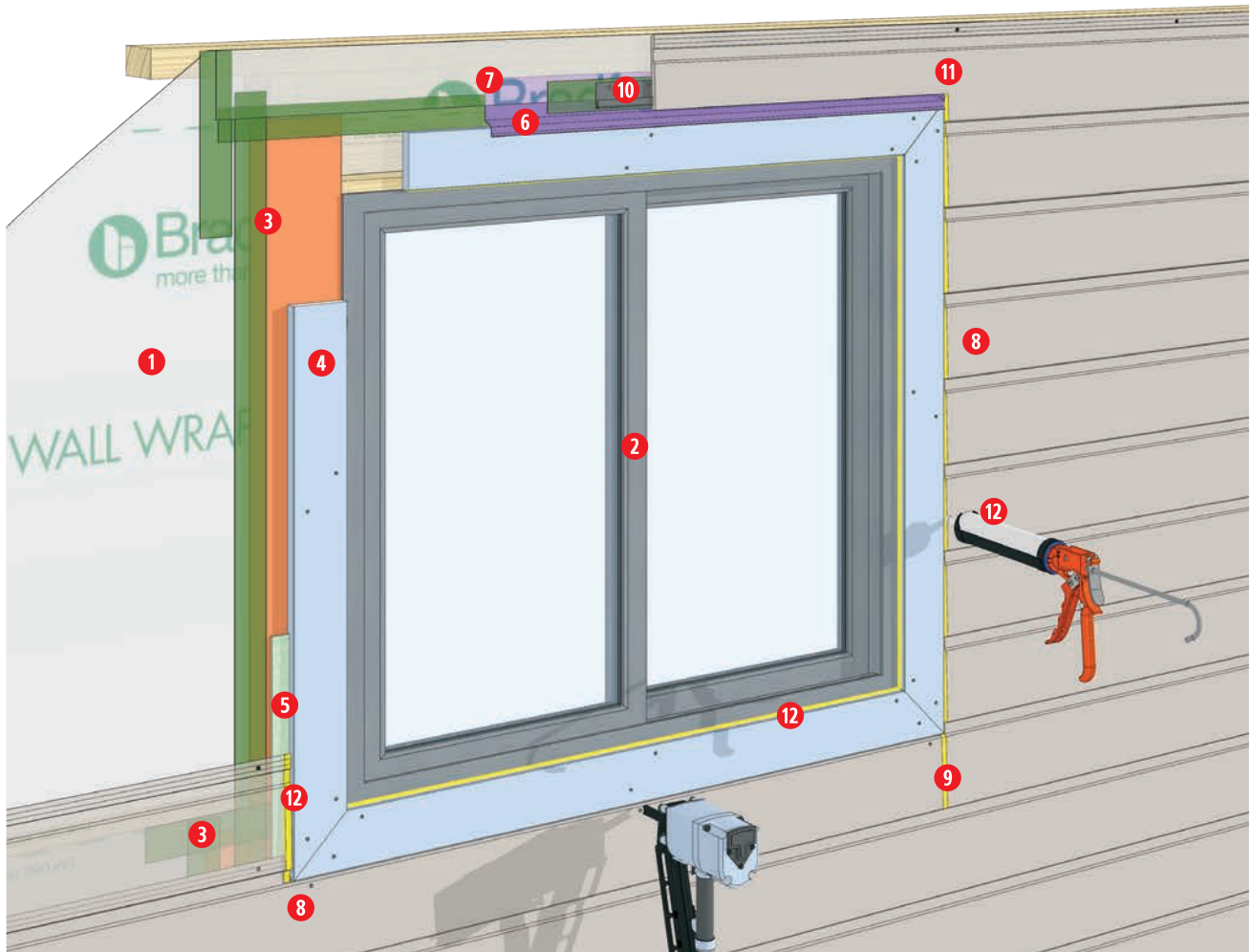
FIGURE 1.01 Weatherboard profiles



Cemintel Trims are available in two sizes:

Cemintel Trim 19mm 45x4200 | Cemintel Trim 19mm 89x3640

FIGURE 1.02 Typical Window Installation Procedure with Cemintel FC Trim – Cemintel Headland or Endeavour Weatherboard or Plank



- 1 Install wall wrap fixed, lapped and taped to manufacturer's specifications
- 2 Install window into opening to manufacturer's specifications
- 3 Tape window jamb and sill flashing to wall wrap
- 4 Cut and install Cemintel 19 x 89mm FC trims around window (pre-coat cut edges with exterior sealer) and fix to structural framing at 600mm max. cts
- 5 Install self adhesive foam tape to sides and below window trims as backing for sealant
- 6 Install metal head flashing to the full width of window trims (supplied by others), turn up stop-ends, and fill gaps at ends with sealant to prevent drainage behind cladding
- 7 Install additional wall wrap over metal head flashing, extended 200mm min. past sides of window and up and under nearest lap above or to soffit, and tape at all edges
- 8 Trim Cemintel Weatherboard, to provide 3mm minimum clearance to Cemintel FC window trim (pre-drill boards less than 100mm width and pre-coat cut edges with exterior sealer)
- 9 Cut and fit weatherboards to provide a movement joint at the edge of the opening and fill with approved sealant. Provide cut joint at both sides of the opening where weatherboard width is reduced below 100mm
- 10 Install Cemintel Starter Strip or chamfered packing to support the weatherboard over the window (vermin proof any gaps formed due to packing)
- 11 Trim Cemintel weatherboard to suit head flashing, provide drainage clearance of 10-15mm above flashing (pre-drill boards less than 100mm width and pre-coat cut edges with exterior sealer)
- 12 Fill gaps between weatherboards and window trims at sides and bottom of window with approved sealant, and apply 3mm bead of sealant at the junction of the window frame and trims

FIGURE 1.03 Typical Window Installation with Cemintel FC Trim – Cemintel Headland or Endeavour Weatherboard or Plank

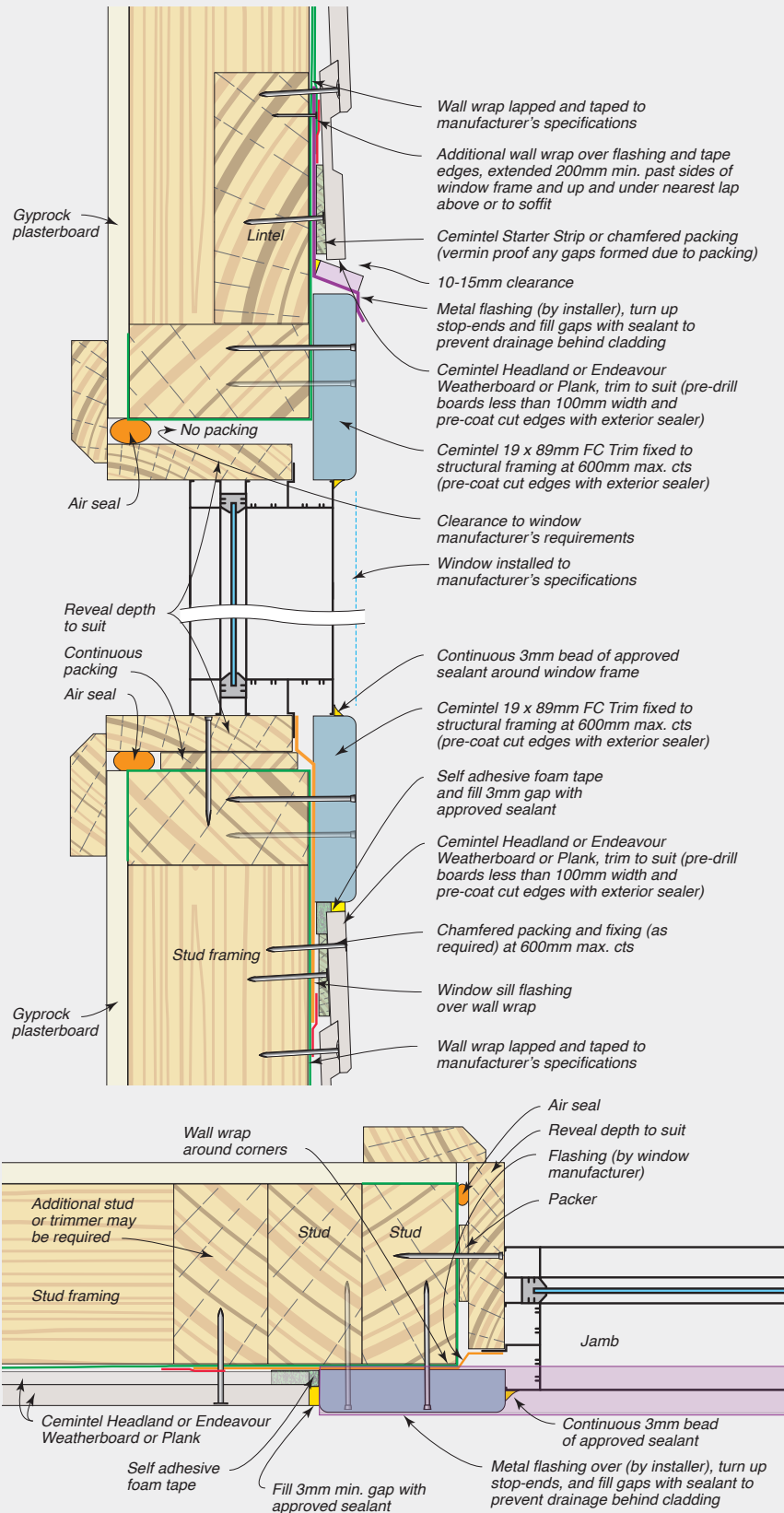


FIGURE 1.04 Typical External Corner Installation with Cemintel FC Trims – Cemintel Headland or Endeavour Weatherboard or Plank

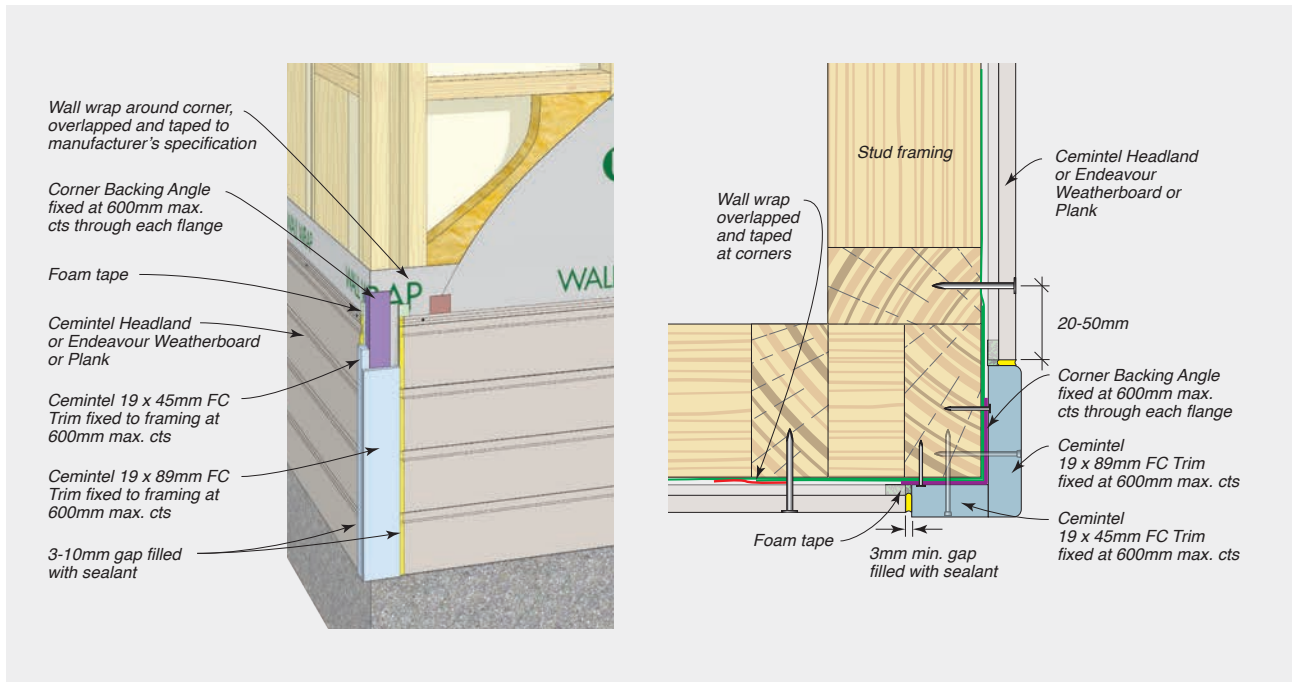


FIGURE 1.05 Typical Internal Corner Installation with Cemintel FC Trims – Cemintel Headland or Endeavour Weatherboard or Plank

