

# CEMINTEL®

---

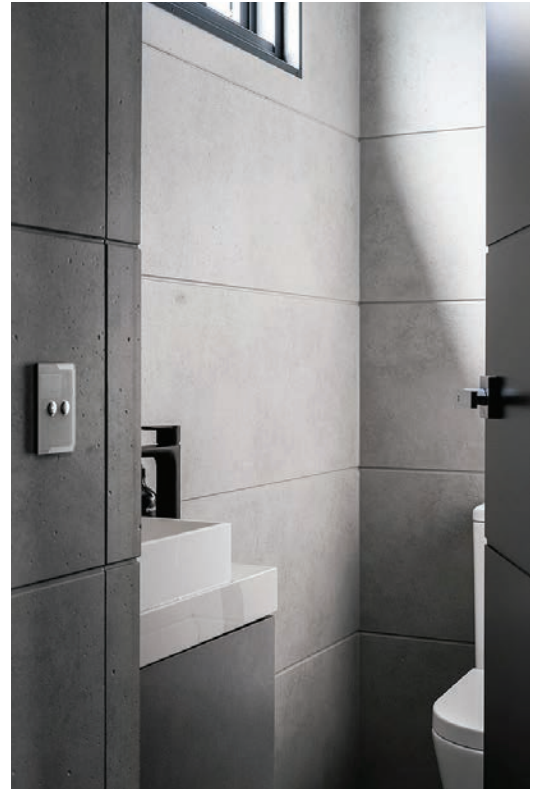
## Capability Statement



---

## TABLE OF CONTENTS

Company Overview	2
Trust and Reputation	3
Company Resources	3
People	
Production Facilities	
Inventory and Distribution	
Manufacturing Process for Fibre Cement	
Company Details	5
Sustainable Manufacturing	5
Workplace Health and Safety	6
Community	7
Product Showcase	7
Head Office and State Locations	8



---

## COMPANY OVERVIEW

Cemintel is part of the CSR family of building product businesses. Manufacturing and distributing fibre cement products, the business commenced operating in 1996.

Since commencing manufacturing to offer the Australian market a fibre cement alternative, Cemintel has delivered innovative products to the market. Through research, analysis of trends and customer feedback, these products continue to be used and relied upon by our many customers. They are so good, other companies are now trying to replicate these products, and we believe the original version is often the best.

The factory was initially focused on manufacturing internal linings products, especially for wet areas, however, with shifting market trends, it now has a more diversified range of products including facades and cladding, ceilings and soffits and compressed flooring and decking panels.

The product range has also extended to include imported products to meet the market demands for facades and cladding.

---

## **TRUST AND REPUTATION**

Cemintel's trusted systems have been used in thousands of square metres of high quality Australian construction projects.

Being part of CSR, a company with more than 160 years' history in Australia, this provides unparalleled backing and resources. This is not a fly-by-night business. It is focused on developing long term relationships with its customers and delivering products that are safe, compliant and aesthetically pleasing.

---

## **COMPANY RESOURCES**

### **People**

As all successful companies recognise, people are what make businesses successful. Cemintel has over 100 employees who are passionate about delivering great experiences and products to the industry.

### **Production Facilities**

Products are manufactured at the Wetherill Park plant in New South Wales. These include weatherboards, Ceminseal® Wallboard and Barestone®. Locally manufactured products are made to comply with AS/NZS 2908.2:2000.

Imported products are manufactured by our global partners who have facilities in Europe, Japan and China. Regular testing of all imported products is conducted to ensure they comply with Cemintel's Quality Standards. While documentation is provided from the country of origin, independent testing is also conducted randomly in Australia by a National Association Testing Authority (NATA) accredited company. Products are not released into the market until testing results are cleared.

Products and systems are covered by warranty to perform relevant to Australian Standards and the Building Code requirements, and solutions are provided to meet fire, acoustic and thermal requirements to service all segments of the construction industry.

### **Inventory and Distribution**

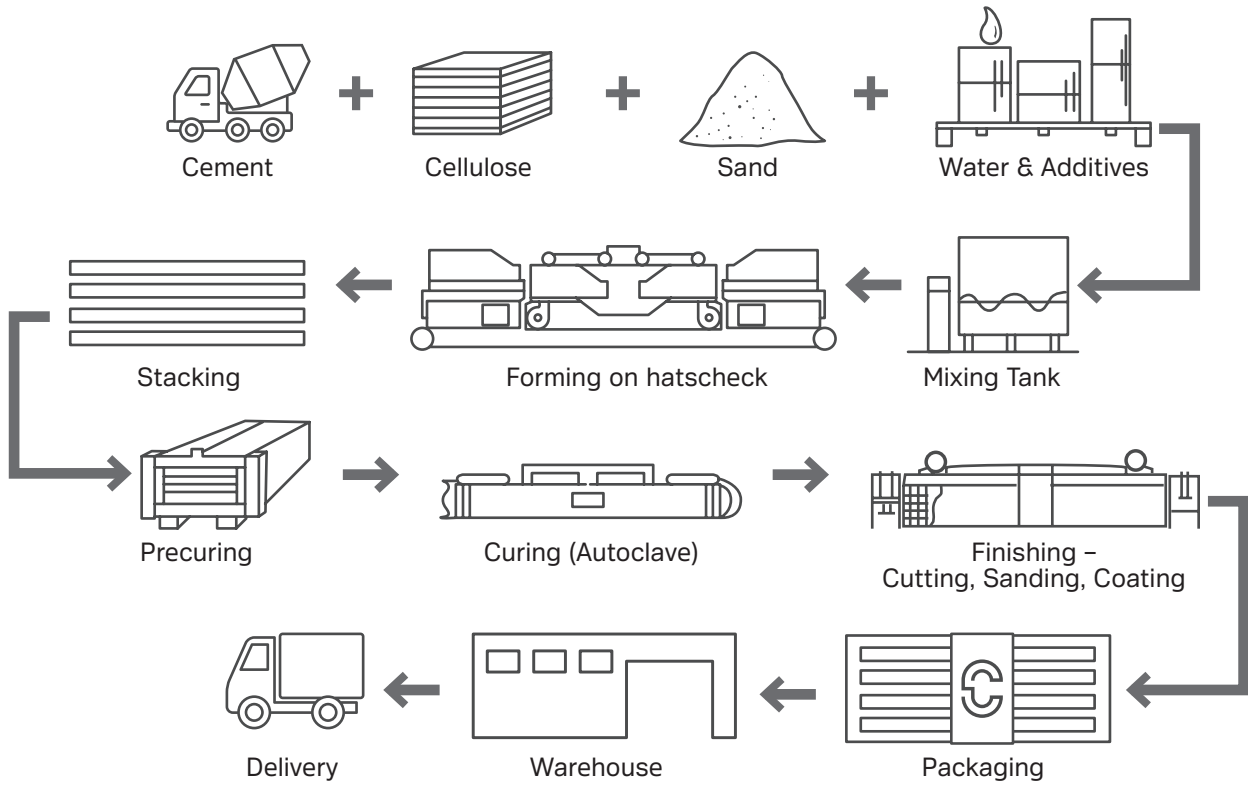
All products manufactured in Australia are stocked at warehouses in each state, and these facilities are shared with CSR Gyprock, an iconic Australian brand.

Imported products are held at a separate warehouse in Wetherill Park that is equipped to handle the numerous containers received each month.

This national footprint of warehouses services a number of distributors around the country who support the Cemintel business.

## Manufacturing Process for Fibre Cement

Generally the process of making fibre cement is consistent between manufacturers. Variations occur from the curing and finishing stages of the process.



---

## COMPANY DETAILS

Business Name:	Cemintel (a registered business trademark)
Parent Company Name:	CSR Building Products Pty Ltd
ABN:	55 008 631 356
Public Liability Insurance Provider:	AON – Combined General and Public Liability - \$50m
Workers' Compensation:	Self insured
Bankers:	Commonwealth Bank of Australia
Company Equity:	CSR Total \$1.27B (as per 2018 Annual Report)

---

## SUSTAINABLE MANUFACTURING

Cemintel focuses on the following areas of sustainability in manufacturing:

Water/Solid Management	Water is a critical element to producing fibre cement, and requires sustainable and responsible water management systems. The majority of process-water used during the manufacturing process is recycled. Product waste that cannot be recycled on site or in the manufacturing process is converted to road base.
Recycling	At the end of each autoclave cycle, the used steam is either transferred to another autoclave for re-use or transferred into tanks, converted into condensate and cooled down with the aid of cooling towers. This water is eventually treated with the rest of the process water from other parts of the plant. This ultimately helps with reducing odour concentration and minimises potential emissions.
Lower Embodied Energy	Fibre cement has a significantly lower embodied energy than traditional masonry materials. According to Dr Bill Lawson in his study into Building Materials, Energy and the Environment, the embodied energy of a timber frame, fibre cement weatherboard wall is 169 MJ/sqm*, whilst the embodied energy of a cavity clay brick wall is 860MJ/sqm*. Such factors are recognised worldwide and have led the Building Research Establishment in the UK to award wall systems using fibre cement cladding an A+ rating in its Green Guide to Specification.
VOCs	Prefinished products are coated with various sealers. The amount of VOCs is minimal and well within the levels recommended by the Green Building Council.

---

## WORKPLACE HEALTH AND SAFETY

A major sustainability focus remains on safety and we place the same emphasis and importance on managing workplace health and safety as any other business imperative.

Cemintel is fully committed to:

- Ensuring a safe work place for its employees
- Continually striving to improve safety performance
- Instilling a culture to achieve a ZERO harm work environment

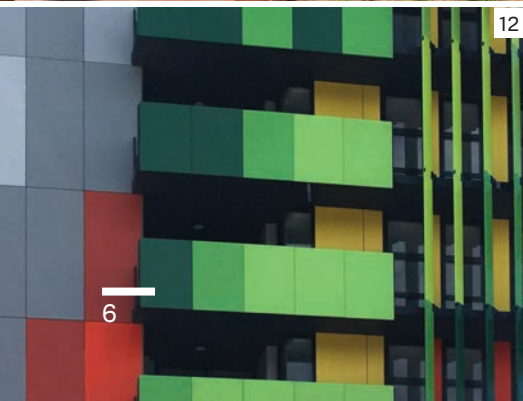
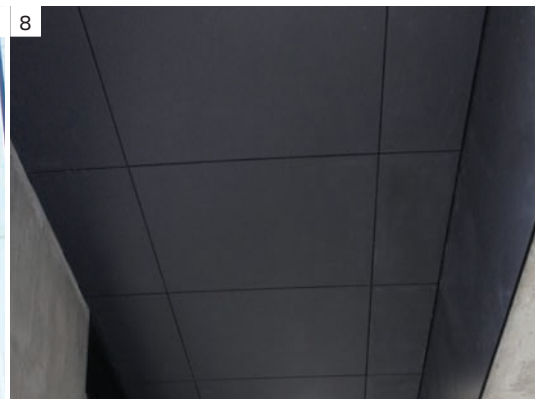
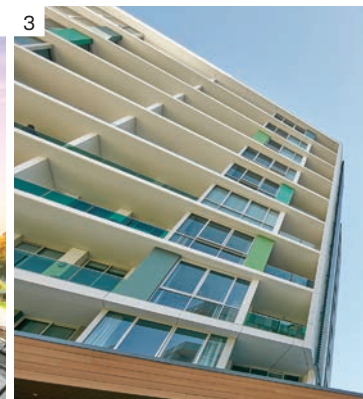
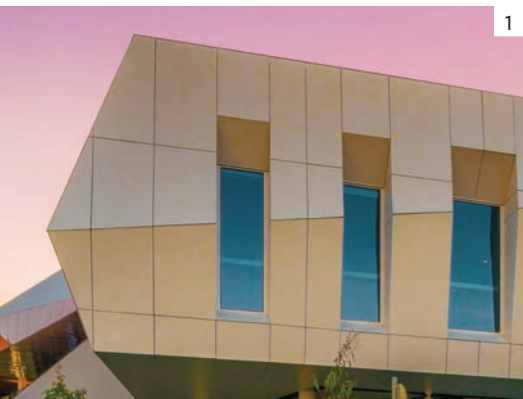
---

## PRODUCT SHOWCASE

- 1 Casey Hospital, VIC
- 2 Fairbairn Pavillion, VIC
- 3 Wollie Creek Apartments, NSW
- 4 Warrnambool College, VIC
- 5 Lansell Square Shopping Centre, VIC

- 6 Maragon Early Learning Centre Wellard, WA
- 7 University of South Australia, SA
- 8 Rosanna Train Station, VIC
- 9 UniLodge, NSW

- 10 Fingal Bay, VIC
- 11 Gordonvale State High School, QLD
- 12 Commonwealth Games Village, QLD
- 13 St John The Baptist Catholic Primary School, NSW

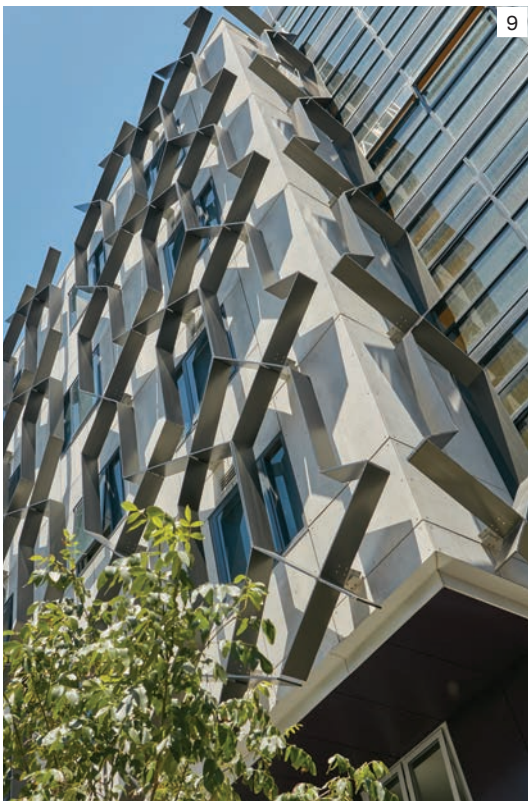


---

## COMMUNITY

Cemintel employees, as part of the CSR family, continue to partner with a number of organisations in line with our commitment to operate in a sustainable manner, with the community at the centre of our right to operate.

CSR launched the Community Support Program 15 years ago as a core component of our community involvement where CSR matches employee contributions dollar for dollar to a range of charitable organisations. To date, more than \$3m has been donated to charity through this initiative.



---

## HEAD OFFICE AND STATE LOCATIONS

Head Office	Trinity 3, 39 Delhi Road, North Ryde NSW 2113
State Offices	Brisbane 768 Boundary Road, Coopers Plains QLD 4108
	Sydney 376 Victoria Street, Wetherill Park NSW 2164
	Canberra 92 Barrier Street, Fyshwick ACT 2609
	Melbourne 277 Whitehall Street, Yarraville VIC 3013
	Hobart 11 Farley Street, Derwent Park TAS 7009
	Adelaide Lot 100 Sharp Court, Mawson Lakes SA 5095
	Darwin Cnr Stuart Highway & Angliss Street, Berrimah NT 0828
	Perth 19 Sheffield Road, Welshpool WA 6106
Customer Service	1300 236 468
DesignLink	1800 621 117

